

CMA5000

Universal Transport Analysis Module





CMA 5000

Universal Transport Analysis Module

One tool is all you need!

Key Features and Benefits

- Multi-technologies module
- Reduce training and test time through targeted, user-friendly applications
- Protect your investment with a complete open architecture and future-proof technology

The last few years have witnessed a tremendous evolution of the transport networks with the emergence of new technologies. Engineers and technicians tasked with the installation, turn-up and maintenance of today's networks have to deal with this increasing complexity in their daily job. In this context, a test instrument like the CMA5000-UTA capable to manage all the main technologies in one single module is a great help.

Universal

The Universal Transport Analysis -UTA- module represents a new generation of tester with this ability to support almost all the existing transport standards: Ethernet, SONET/SDH, OTN, ... With its small size, the UTA module fits in the CMA5000 platform and provides a very portable solution for field engineer.

Flexible

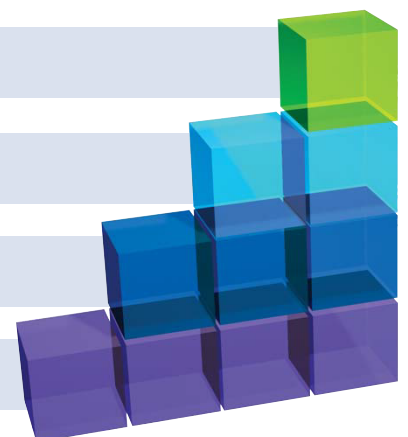
The UTA module also supports hot pluggable XFP and SFP transceivers. This feature brings a lot of configurability to the module. Whatever the network or equipment to test, the field engineer has the insurance to be able to equip his UTA module with the right optical interface.

OTN (OTU-1, OTU-2, 11G)

10 GigE (LAN & WAN-PHY)

SONET

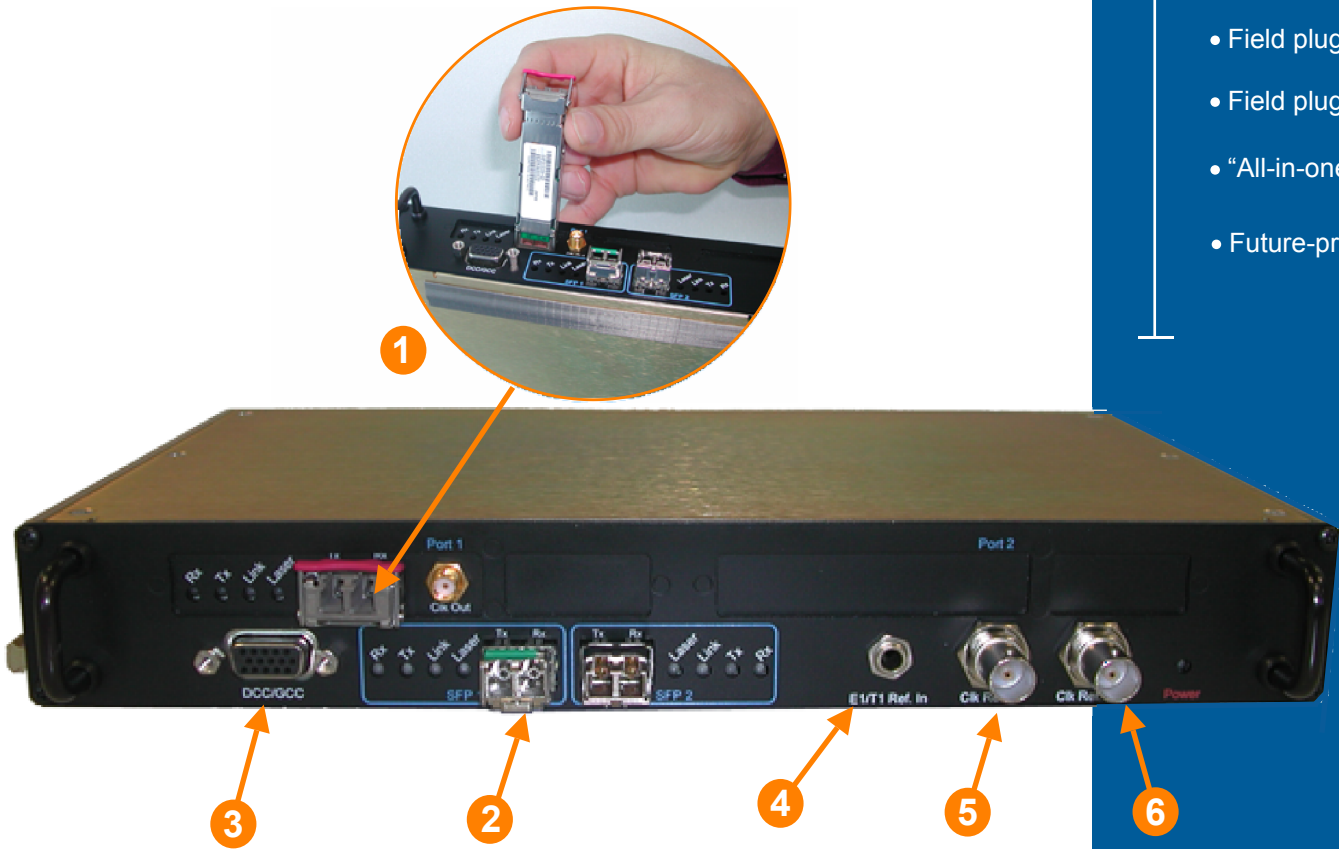
SDH



Module Overview

Key Features

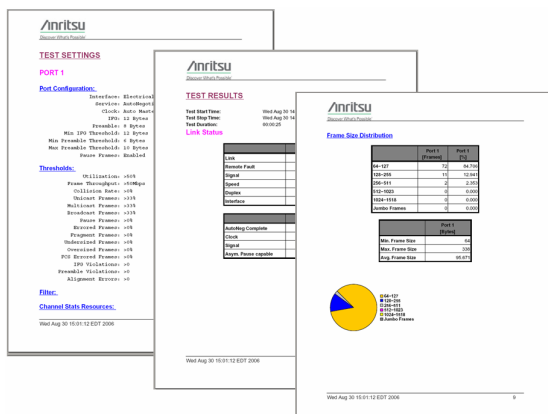
- Field pluggable XFP
- Field pluggable SFP
- “All-in-one” module
- Future-proof hardware



- 1 Field pluggable XFP
- 2 Field pluggable SFP
- 3 Data Communication Channel connector for add & drop
- 4 Clock reference input at 2.048 Mbit/s or 1.544 Mbit/s (Bantam 100 ohms)
- 5 Clock reference input at 2.048 Mhz, 1.544 Mhz or 10 MHz (BNC 75 ohms)
- 6 Clock output at 10 Mhz synchronous with the transmitted signal

Ease of use

Spend your time analyzing the results, instead of trying to understand the equipment. All the UTA applications use the same user-friendly graphical interface. This reduces the time it takes to learn how to use the instrument and increases measurement time efficiency: Pre-configured tests, On-line help, Automatic test reports as shown below:



UTA Applications Family

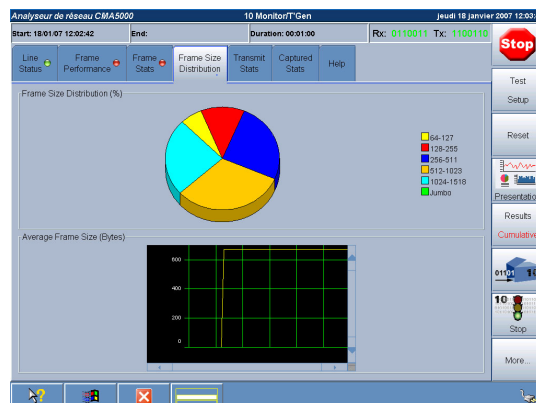
Key Features

10 GigE Application

- Support of LAN-PHY and WAN-PHY
- Field pluggable XFP: 10GBASE-SR, -LR, -ER, -SW, -LW, -EW
- Automated RFC 2544 tests
- BERT Test
- Sequence test

10 GigE Application

To ensure proper and efficient deployment of services, the **UTA 10 GigE application** measures critical parameters during network installation, including throughput, latency, burstability and frame loss (as detailed in RFC 2544). Full line rate traffic generation and shaping up to 10 Gbps, combined with comprehensive professional reporting, ensures the easy installation, maintenance, troubleshooting and documentation of 10 GigE LAN-PHY and WAN-PHY networks.

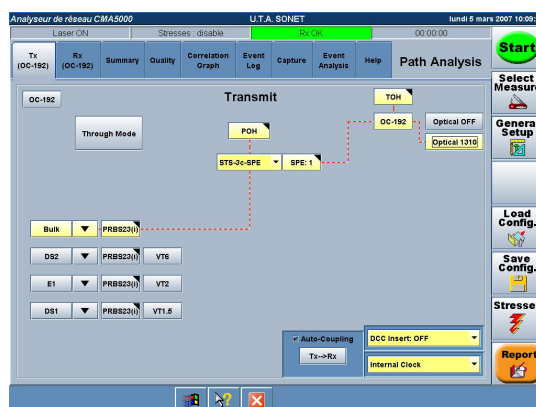


SONET / SDH Application

- Generates and analyzes SONET/SDH frames down to the tributary level
- Round trip delay measurement with 100 ns resolution
- APS measurement with 125 μs resolution

SONET / SDH Application

For characterizing and documenting network performance levels, the **UTA SONET / SDH application** provides efficient, reliable testing of a multitude of parameters, including Alarm and Error analysis, APS with 125 μs resolution, Round Trip Delay measurement with 100 ns resolution, network availability and performance evaluation. The UTA application characterizes SONET/SDH networks from 10 Gbps down to the tributary level (DS1/E1).



OTN Application

- Test OTN networks up to 11.095 Gbps
- Support Poisson error generation (O.182) for accurate FEC evaluation
- SDH/SONET mapping into OTU-2/OTU-1
- ODU-1 mapping into ODU-2

Unique Feature

OTN Application

The CMA5000-UTA module supports the OTU-1 (2.66 Gbps) and OTU-2 (10.709 Gbps) frame formats as defined in the G.709 recommendation. In addition, the UTA module also supports the 11.049 Gig FEC and 11.095 Gig FEC formats. Both formats are identical to standard OTU-2 frame but with over-clocking in order to authorize the mapping of LAN traffic directly into the OTN frame. Error generation according to the O.182 recommendation is also supported for accurate FEC evaluation.



More applications to come

The UTA module is a future-proof tester. It has been designed to support most of the transport standards. You can ask to your Anritsu contact for the latest update.

General Information

General Specifications	
<ul style="list-style-type: none"> The UTA hardware is a double size plug-in module compatible with the CMA 5000 Multi-Layer Network Test Platform (small, medium or large bay adapters) <i>Note 1: For best performance, the CMA5000 platform must have 512M RAM when using UTA with more than one application.</i> AC power: 100 to 250 VAC via CMA 5000 platform 	
Environmental specifications:	Operating Temperature: 0°C to +40°C Storage Temperature: -20°C to +70°C Humidity: 10% to 80%
Safety:	Electrical: EN 61010-1 Optical: see specifications of XFP / SFP that are used
EMC:	EN 61326
Warranty:	1 year standard

Ordering Information	
5610-000-UTA	UTA base module *Applications must be ordered separately
5610-101-UTA	10 GigE LAN-PHY application
5610-102-UTA	10 GigE WAN-PHY application
5610-201-UTA	10 Gig SONET/SDH application
5610-216-UTA	"STM-1/4/16 & OC-3/12/48" option for 10 Gig SONET/SDH application
5610-301-UTA	OTN application for UTA module supporting OTU-2 interface
5610-311-UTA	"OTU-1" option for OTN application

Note 2: For more detailed ordering information related to each application (accessories list and options), see the corresponding application datasheet.

Note 3: The XFP/SFP interfaces of the UTA module meets the requirements stated in the MSA standard.

Note 4: All the 10G/11G applications are field upgradeable.

For upgrades with references 5610-216-UTA and 5610-311-UTA, customers must call their Anritsu contact with module Serial Number as hardware upgrade might be required

Anritsu Corporation

5-1-1 Onna, Atsugi-shi, Kanagawa, 243-8555
Japan
Phone: +81-46-223-1111
Fax: +81-46-296-1264

• U.S.A.**Anritsu Company**

1155 East Collins Blvd., Richardson, TX
75081, U.S.A.
Toll Free: 1-800-ANRITSU (267-4878)
Phone: +1-972-644-1777
Fax: +1-972-671-1877

• Canada**Anritsu Electronics Ltd.**

700 Silver Seven Road, Suite 120, Kanata,
Ontario K2V 1C3, Canada
Phone: +1-613-591-2003
Fax: +1-613-591-1006

• Brazil**Anritsu Eletrônica Ltda.**

Praca Amadeu Amaral, 27 - 1 Andar
01327-010-Paraiso-São Paulo-Brazil
Phone: +55-11-3283-2511
Fax: +55-11-3288-6940

• Mexico**Anritsu Company, S.A. de C.V.**

Av. Ejército Nacional No. 579 Piso 9, Col.
Granada, 11520 México, D.F., México
Phone: +52-55-1101-2370
Fax: +52-55-5254-3147

• U.K.**Anritsu EMEA Ltd.**

200 Capability Green, Luton, Bedfordshire LU1
3LU, U.K.
Phone: +44-1582-433280
Fax: +44-1582-731303

• France**Anritsu S.A.**

16/18, Avenue du Québec, SILIC 720
91961 COURTABOEUF Cedex, France
Phone: +33-1-60-92-15-50
Fax: +33-1-64-46-10-65

• Germany**Anritsu GmbH**

Nemetschek Haus, Konrad-Zuse-Platz 1
81829 München, Germany
Phone: +49-89-442308-0
Fax: +49-89-442308-55

• Italy**Anritsu S.p.A.**

Via Elio Vittorini, 129, 00144 Roma, Italy
Phone: +39-6-509-9711
Fax: +39-6-502-2425

• Sweden**Anritsu AB**

Borgafjordsgatan 13, 164 40 KISTA, Sweden
Phone: +46-8-534-707-00
Fax: +46-8-534-707-30

• Finland**Anritsu AB**

Teknobulevardi 3-5, FI-01530 Vantaa, Finland
Phone: +358-20-741-8100
Fax: +358-20-741-8111

• Denmark**Anritsu A/S**

Kirkebjerg Allé 90 DK-2605 Brøndby, Denmark
Phone: +45-72112200
Fax: +45-72112210

• Spain**Anritsu EMEA Ltd.****Oficina de Representación en España**

Edificio Veganova
Avda de la Vega, n° 1 (edf 8, pl 1, of 8)
28108 ALCOBENDAS - Madrid, Spain
Phone: +34-914905761
Fax: +34-914905762

• Russia**Anritsu EMEA Ltd.****Representation Office in Russia**

Tverskaya str. 16/2, bld. 1, 7th floor.
Russia, 125009, Moscow
Phone: +7-495-363-1694
Fax: +7-495-935-8962

• United Arab Emirates**Anritsu EMEA Ltd.****Dubai Liaison Office**

P O Box 500413 - Dubai Internet City
Al Thuraya Building, Tower 1, Suit 701, 7th
Floor
Dubai, United Arab Emirates
Phone: +971-4-3670352
Fax: +971-4-3688460

• Singapore**Anritsu Pte Ltd.**

10, Hoe Chiang Road, #07-01/02,
Keppel Towers, Singapore 089315
Phone: +65-6282-2400
Fax: +65-6282-2533

• India**Anritsu Pte. Ltd.****India Branch Office**

Unit No. S-3, Second Floor, Esteem Red Cross
Bhavan, No 26, Race Course Road,
Bangalore 560 001, India
Phone: +91-80-32944707
Fax: +91-80-22356648

• P.R. China (Hong Kong)**Anritsu Company Ltd.**

Units 4 & 5, 28th Floor, Greenfield Tower,
Concordia Plaza, No. 1 Science Museum
Road, Tsim Sha Tsui East, Kowloon, Hong
Kong
Phone: +852-2301-4980

• P.R. China (Beijing)**Anritsu Company Ltd.****Beijing Representative Office**

Room 1515, Beijing Fortune Building,
No. 5, Dong-San-Huan Bei Road,
Chao-Yang District, Beijing 10004, P.R. China
Phone: +86-10-6590-9230
Fax: +86-10-6590-9235

• Korea**Anritsu Corporation, Ltd.**

8F Hyunjuk Building, 832-41, Yeoksam dong,
Kangnam-ku, Seoul, 135-080, Korea
Phone: +82-2-553-6603
Fax: +82-2-553-6604

• Australia**Anritsu Pty Ltd.**

Unit 21 / 270 Ferntree Gully Road,
Notting Hill, Victoria 3168 Australia
Phone: +61-3-9558-8177
Fax: +61-3-9558-8255

• Taiwan**Anritsu Company Inc.**

7F, No. 316, Sec. 1, Neihu Rd., Taipei 114,
Taiwan
Phone: +886-2-8751-1816
Fax: +886-2-8751-1817

Please Contact:

